

SLIDE CYLINDER

RHS-30, 40, 50, 63, 80



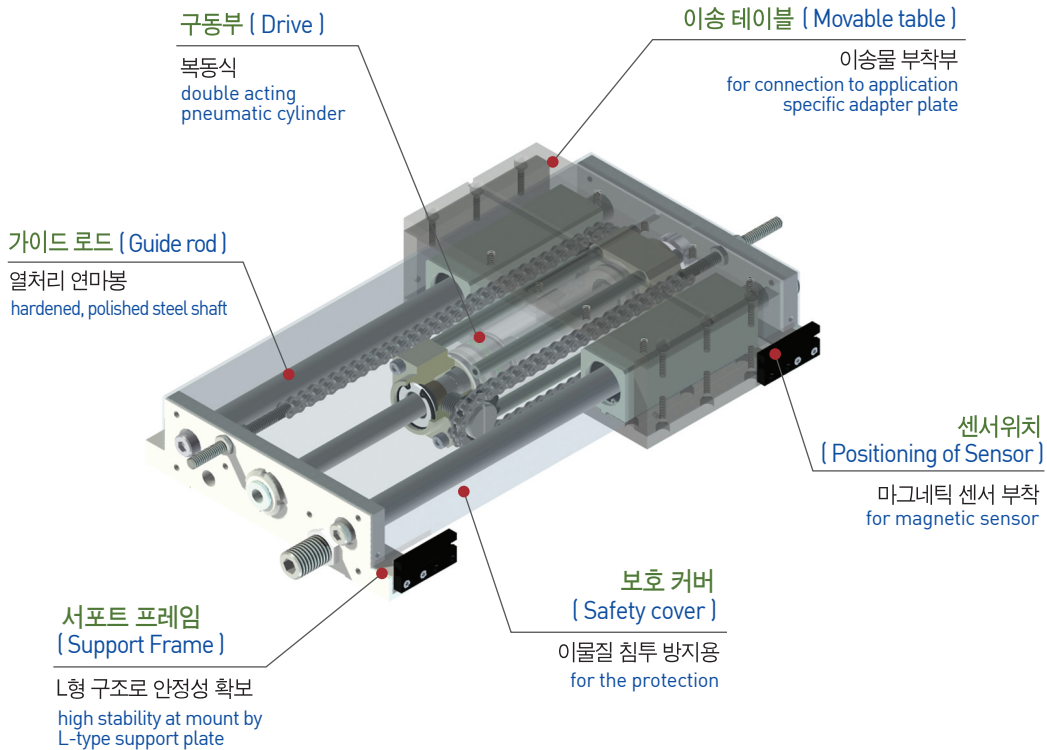
특징 (Character)

- 체인을 이용 행정거리를 2배 확대한 배속 슬라이드 실린더로 일반 슬라이드 실린더의 2배로 고속운전 가능
Double speed slide cylinder on a twice enlarged stroke distance by using chain. possible to make high speed than usual cylinder speed.
- 높이가 낮아 공간활용성이 우수하며 광폭형으로 모멘트에 대한 특성이 우수하고 COVER 부착으로 열악한 환경에서 사용가능
Outstanding utilization of space from low-height and excellent Moment's feature by wide width type. Being possible to use in poor circumstance due to attaching cover.
- 본기종은 슬림형이며, 그외 표준형(RH), 보호카바형(RHC), 광폭형(RHW)등의 기종이 있음
This type is slim, and there are standard(RH), protection cover(RHC) and wide width(RHW), etc.
- 성력화용 실린더로 긴행정이 가능하며 행정의 조정이 가능
As a cylinder for elimination of labor, being possible to be long stroke and to adjust the stroke.
- 자계의 영향을 받지 않는 근접, 리미트 S/W 부착이 가능
Being possible to attach proximity unaffected by a magnetic field and limit S/W



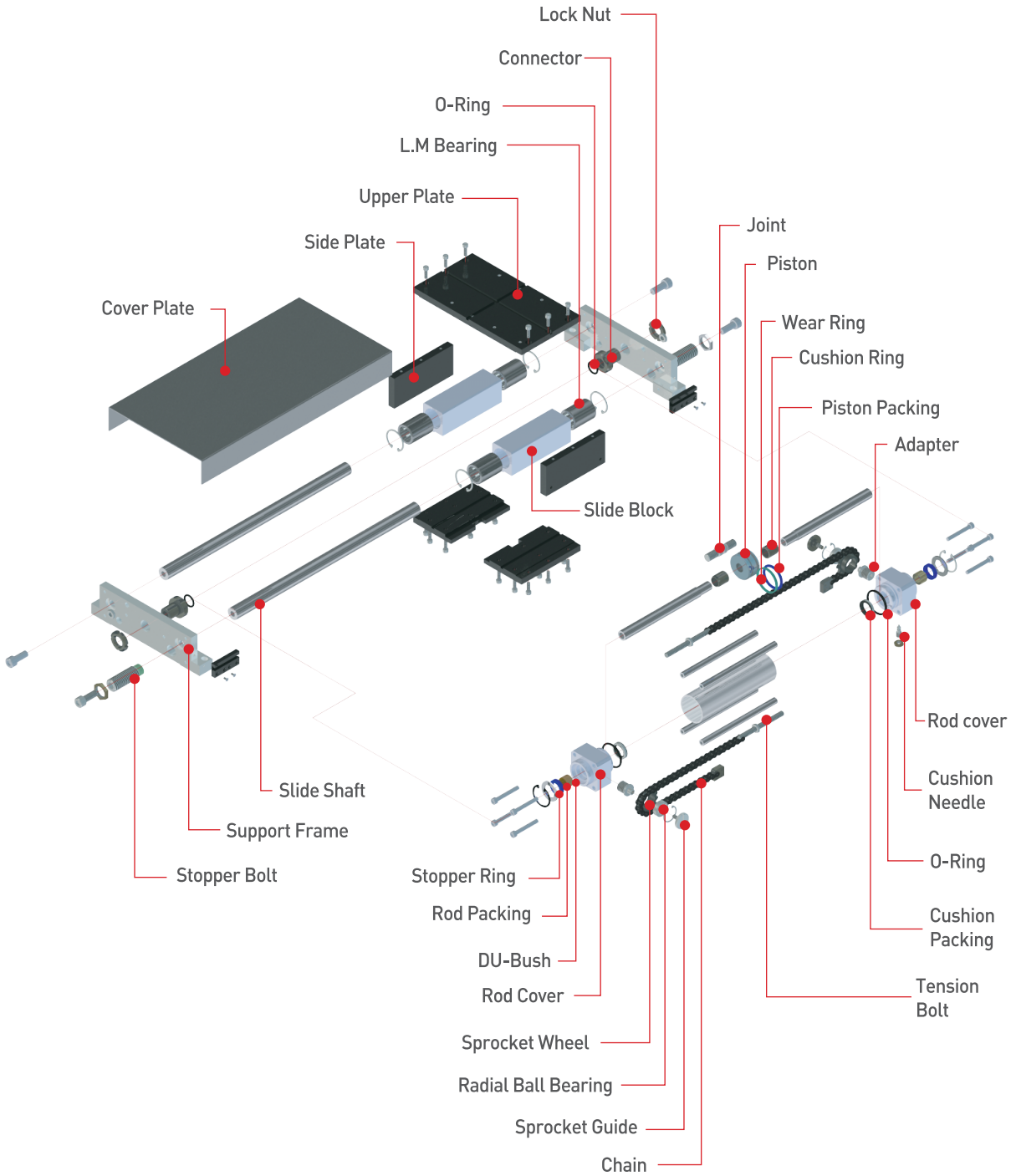
RH
RHC
RHW
RHS
TL
GC
SC
JC
NE
NT
DG
NO
NF
JO
JSR9
JCR9

슬림형 배속실린더 (Slim cover type double speed)



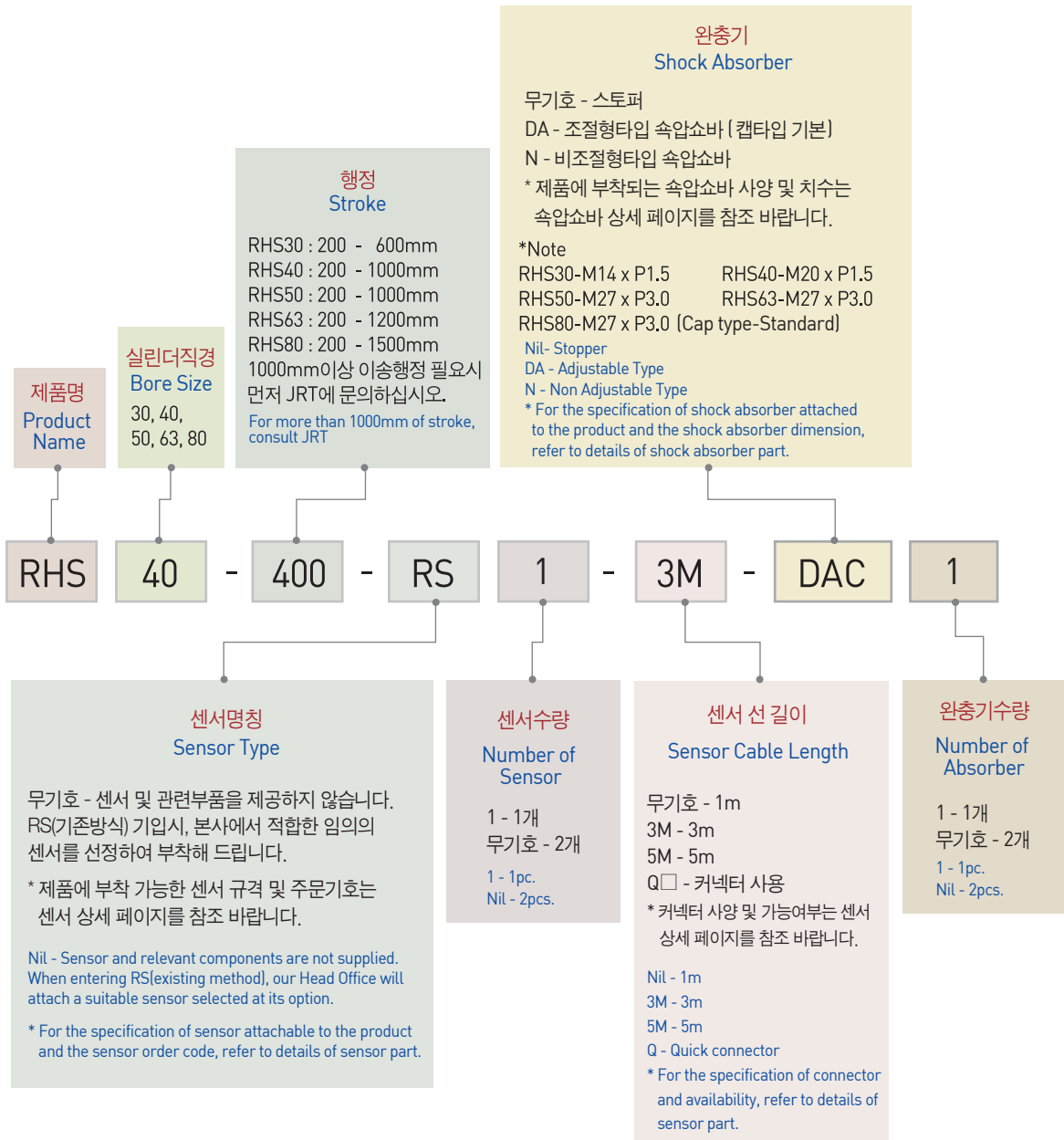
부품분해도 (Exploded view)

※ 본 분해도는 한 제품을 예시하였으므로 기종별로 차이가 있을 수 있습니다.
 ※ This exploded view illustrates a certain product only. The contents may vary by product models.



주문기호 (Ordering Code)

- RH
- RHC
- RHW
- RHS**
- TL
- GC
- SC
- JC
- NE
- NT
- DG
- NO
- NF
- JO
- JSR9
- JCR9



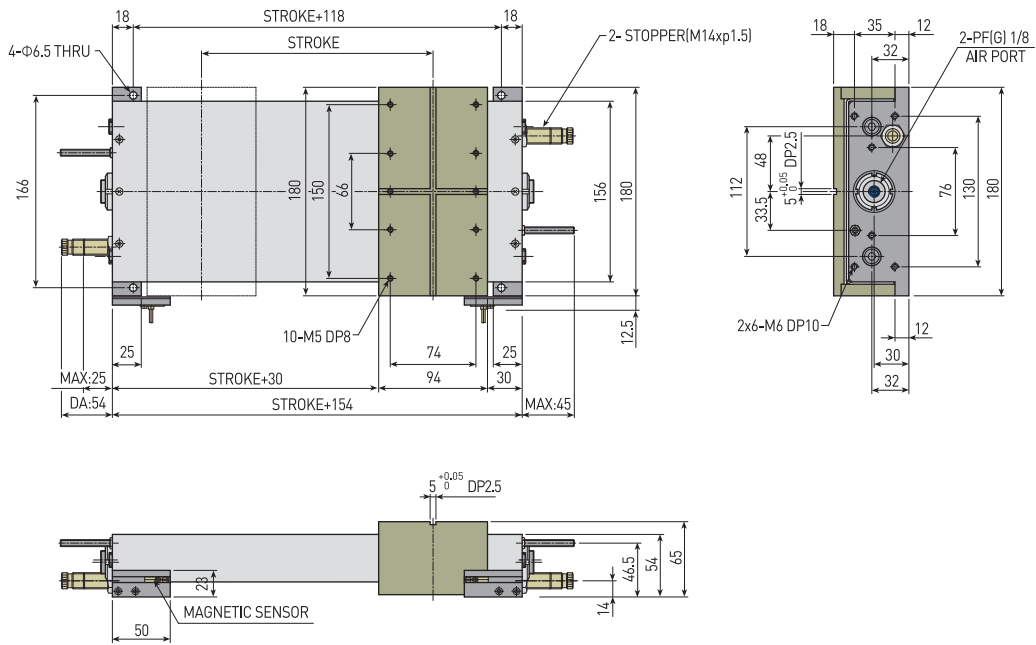
▣ 제품사양 (Specification)

P=공기압력(bar) , St=행정(mm)
P=Air Pressure(bar) , St=Stroke(mm)

제품명칭 Products Name	RHS30	RHS40	RHS50	RHS63	RHS80	단위 Unit
최대행정 Max Stroke	600	1000	1000	1200	1500	mm
최소행정 Min Stroke	200	200	200	200	200	mm
전진추력 Push Power	24.53(P-1.5)	51.01(P-1.2)	80.44(P-0.9)	127.53(P-0.7)	210.92(P-0.7)	N
후진추력 Pull Power	24.53(P-1.5)	51.01(P-1.2)	80.44(P-0.9)	127.53(P-0.7)	210.92(P-0.7)	N
최대이송속도 Max. Speed	1,000	1,000	800	500	500	mm/sec
최소이송속도 Min. Speed	300	250	250	150	150	mm/sec
제품중량 Weight	4.4+0.008xSt	6.83+0.012xSt	12.3+0.018xSt	15.7+0.03xSt	21.0+0.04xSt	kg
배관접속구 Fitting size	PF(G) 1/8	PF(G) 1/8	PF(G) 1/4	PF(G) 1/4	PF(G) 1/2	
1사이클당 공기소모량 Air consumption quantity	0.5xS	1.1xSt	1.6xSt	2.6xSt	4.3xSt	cm ³
반복정밀도 Repetition Accuracy	±0.1					mm
사용압력 Operating pressure	3 to 7					bar
주위온도 Ambient temperature	-5 to 60					℃
윤활 Lubrication	불필요 Needless					

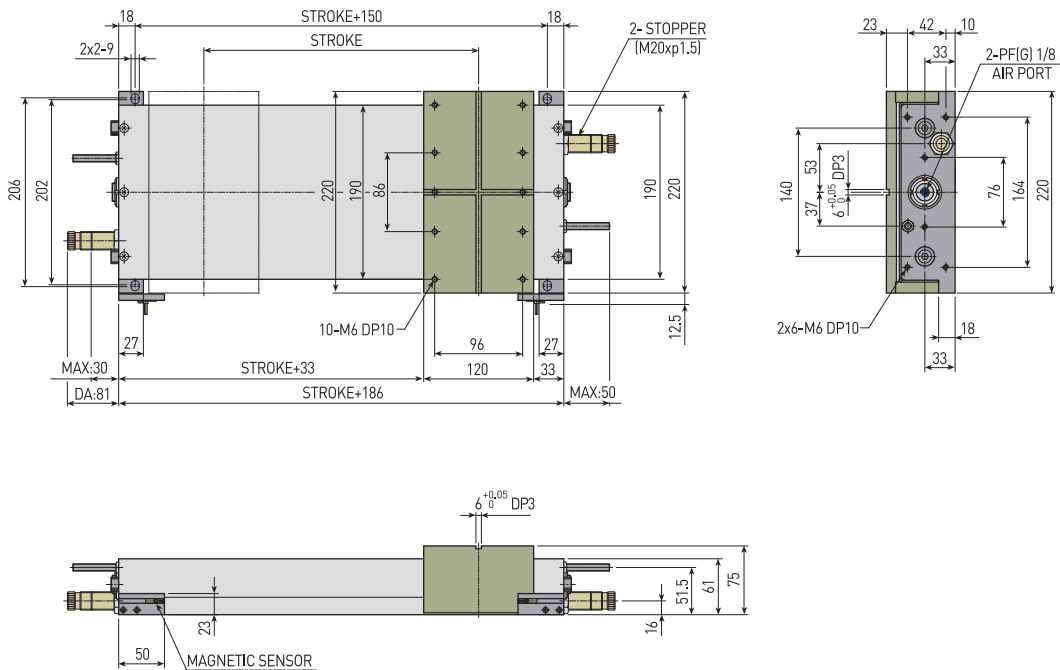
▣ NOTE

RHS-30

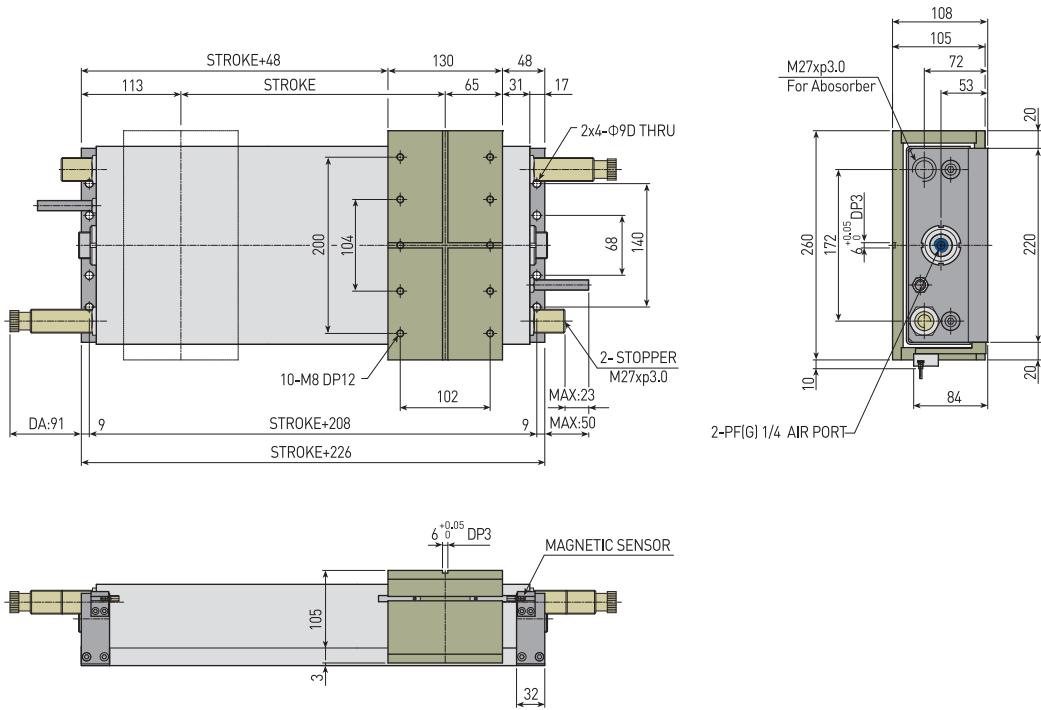


- RH
- RHC
- RHW
- RHS**
- TL
- GC
- SC
- JC
- NE
- NT
- DG
- NO
- NF
- JO
- JSR9
- JCR9

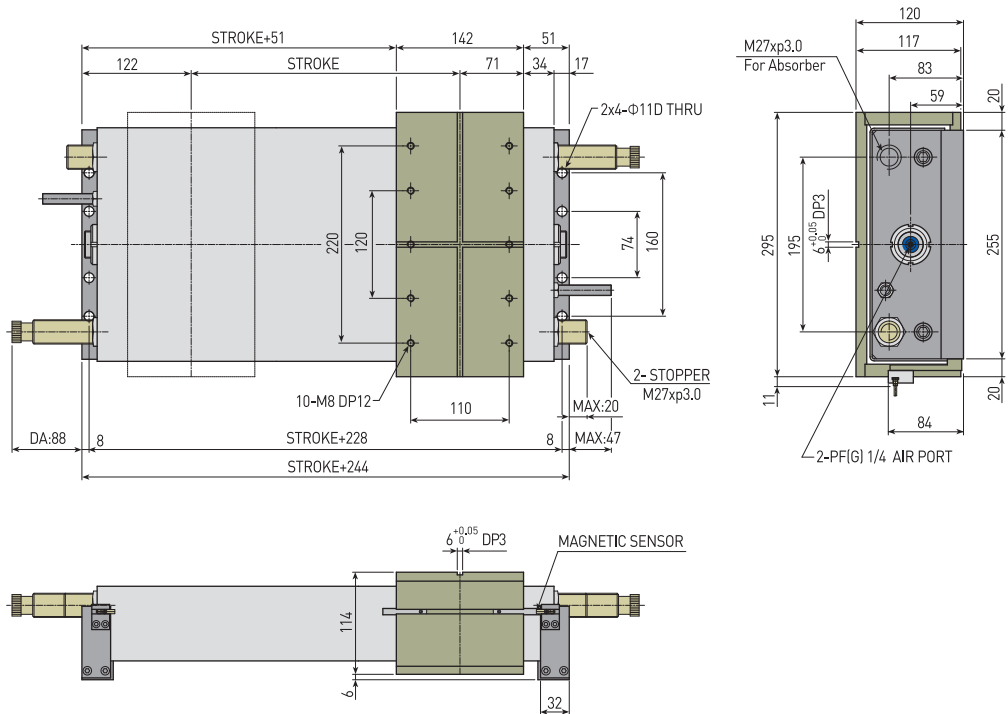
RHS-40



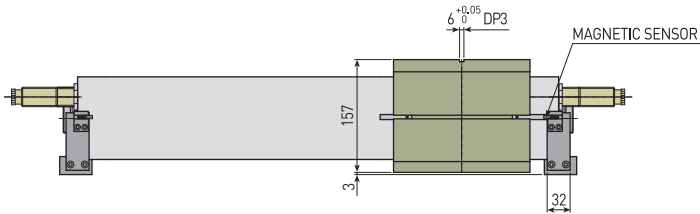
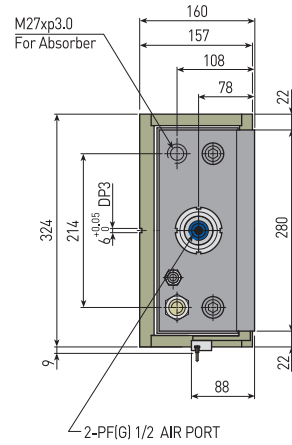
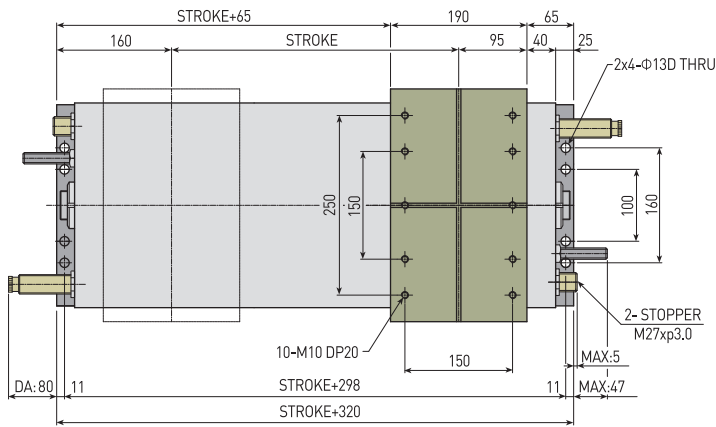
RHS-50



RHS-63



RHS-80



- RH
- RHC
- RHW
- RHS**
- TL
- GC
- SC
- JC
- NE
- NT
- DG
- NO
- NF
- JO
- JSR9
- JCR9

NOTE